

# LED-Cindy

LUMINAIRE FOR WORKSPACES



valtavallo



## Versatile luminaire for workspaces

IP44

### Operating Conditions

Typical applications for LED-Cindy include worktops that require a slim light fixture. The splash-proof (IP44) LED-Cindy is particularly suitable for corner mount over kitchen worktops.



### Installation and maintenance

LED-Cindy can be installed on ceiling or wall surfaces. Corner mount is also possible. Valtavallo LED tubes can be easily installed or replaced without any electrical work.

LED

### Lifetime

The LED-Cindy luminaire is manufactured in Finland. For maximum lifetime, it can be equipped with extremely long-lasting Valtavallo LED tubes.

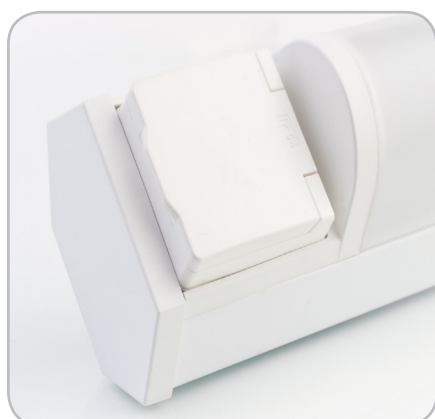


# LED-Cindy

LUMINAIRE FOR WORKSPACES

## Technical Specification

Model	LED-Cindy-I09	LED-Cindy-I18	LED-Cindy-I22
Dimensions (length x width x height mm)	765 x 79 x 45/75	1375 x 79 x 45/75	1675 x 79 x 45/75
Socket Type	T8 / G13		
Input Voltage	230 V AC, 50/60 Hz		
Warranty	3 years		
Protection Class	IP-44 (with louvre)		
Housing Material	White painted galvanised steel sheet, ends of UV stabilised ABS plastic		
Cover Material	Smooth opal plastic		
Connection	Through 3 x 2,5 mm <sup>2</sup> , Feed throughs in the centre of the luminaire (2 pcs)		
Installation	Ceiling and wall surfaces Corner mount also possible Cable can be run inside the luminaire housing.		
Accessories	Splash-proof plug socket, separate switch and motion detector If the luminaire has a plug socket as well as its own switch, there is no separate switch but it can be found by the socket.		
Additional information	Applicable only for LED tubes, cannot be used with traditional fluorescent tubes. Also available through-wired on request. Valtavalo LED tubes to be ordered separately.		



Splash-proof plug socket  
as an accessory



Separate switch  
as an accessory



Motion detector  
as an accessory



Made in Finland